

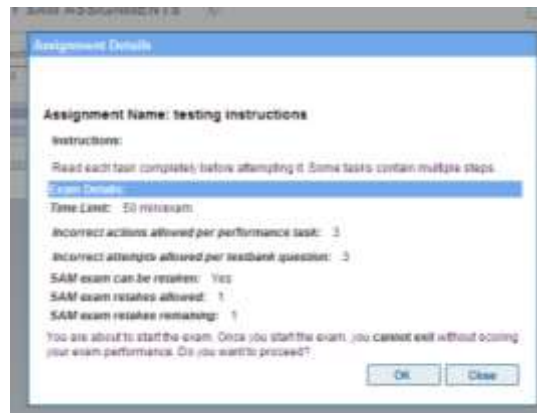
## Instructions for SAM 2009

You can take SAM on your own on any computer with Internet access, Internet Explorer and Adobe Flash. Most computers in the school will be fine. However, you may also come to the Media Center Tech Resource Center (Seminar 1) to take the test at any time; we would be happy to get you logged on. The test is 35 questions and will end at the 50 minute mark.

1. Go to: <http://sam2007.course.com/>
2. Enter your User ID and Password:
  - a. **User ID:** (to be provided)
  - b. **Password:** **ntl2009!**
3. Click on **Log In**.
4. You will be asked to create a secret question and to choose a new password. *Please simply retype your existing password.*



5. Click on **My Assignments**
6. Click on the **GHS Baseline Nov 2009** listed under your Assignments.
7. You will get a confirming message.
8. **Click OK** to begin!
  - a. You must finish SAM in one session. You can't start and then finish later.
  - b. You can retake SAM once.
  - c. You are allowed 3 tries on each question.
  - d. If you wish to skip a question, just click the blue arrow near the bottom of the screen.
9. You will see your results at the end. Have fun!
10. Be sure to come to the Media Center to have your Passport signed.



### Tips

- **Reason through the answers. The task is to know how to find a solution, not to know every answer.**
- There is no one "right way" to do any of these questions. SAM usually accepts multiple "right" ways to do a task. So if you prefer menus, use menus. If you like to "right-click" then do that. If it doesn't like what you are trying to do, you will get a message telling you to try something else.
- For Excel Questions: The ranges have all been pre-selected for you. You only need to do the specified task. If the actual spreadsheet is confusing, just focus on the menus to do the task.